



ADORE
HOMES

UMROLI - EAST, PALGHAR

PROJECT APPROVED BY

HDFC HOME LOANS



The Project is a part of

Shaligram Township

Glizmore Infratech Limited (GIL) is a reliable and trusted real estate developer company from Mumbai. GIL is committed to fulfill the aspirations of individuals seeking a house of their own. Since its inception GIL has worked in developing residential areas in and around Mumbai and other districts of Maharashtra. GIL's vision is to increase self reliance among property seekers and help them have a home of their own. With this vision GIL's mission is to deliver unique integrated lifestyle environs and planned developments. The company focuses on developing integrated master planned communities where in the developments include one or more facilities such as hospitals, schools, retail and commercial establishments enabling a LIVE, WORK and PLAY theme within the same development.





Exterior View



Amenities

- Branded lift
- All flats designed as per vastu
- Kids play area
- Well planned sit out areas and gardens
- Grand entrance lobby
- Security cabins
- Points for geyser, inverter & water purifier
- Decorative laminated entrance door
- Finest 2 x 2 vitrified flooring
- Gypsum finish internal walls
- Internal wall finished with oil bound distemper in pleasing shades
- Concealed ISI marked electrical copper wiring & modular switches
- Exterior finished with water proof cement paints

Actual Site Images



**1 BHK
3D View**



**2 BHK
3D View**

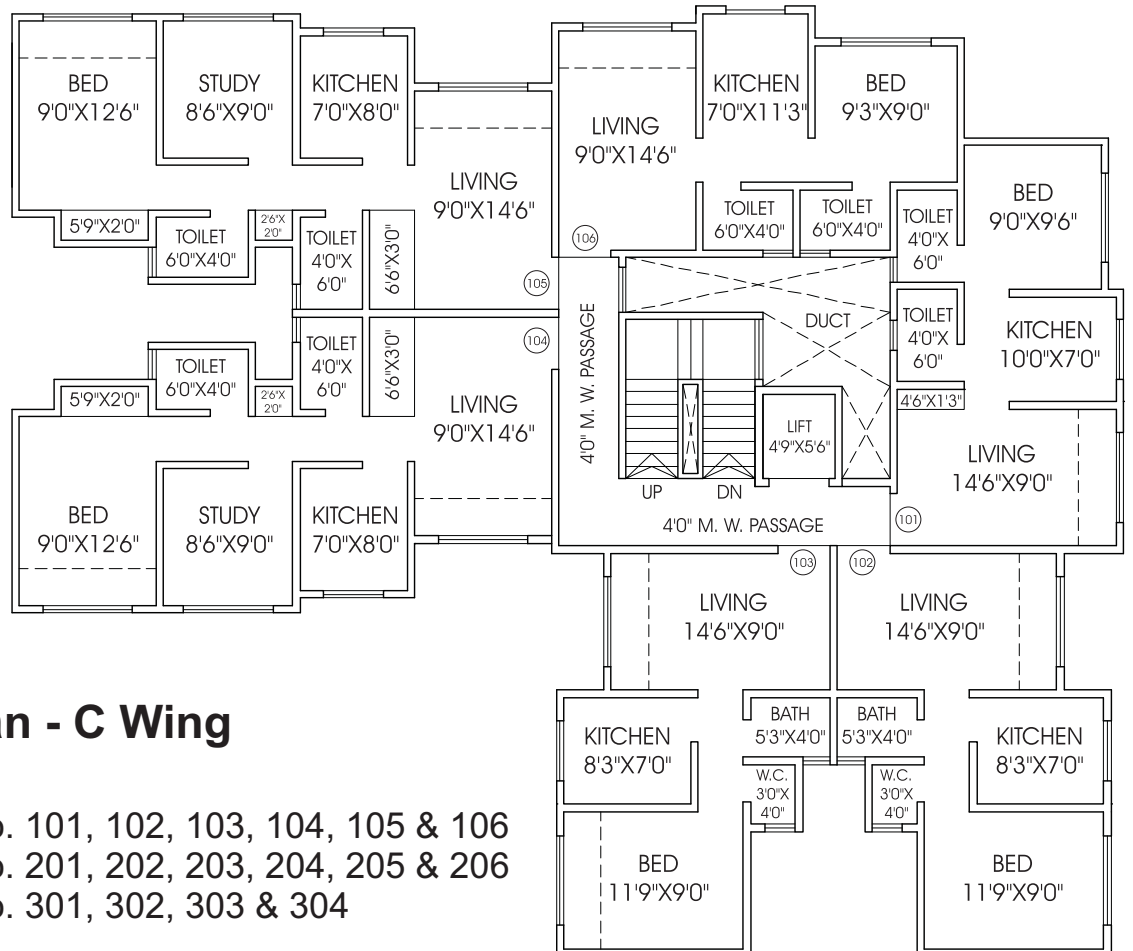
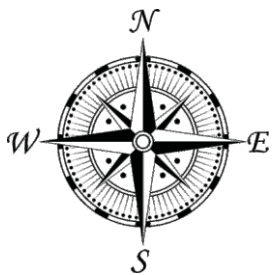
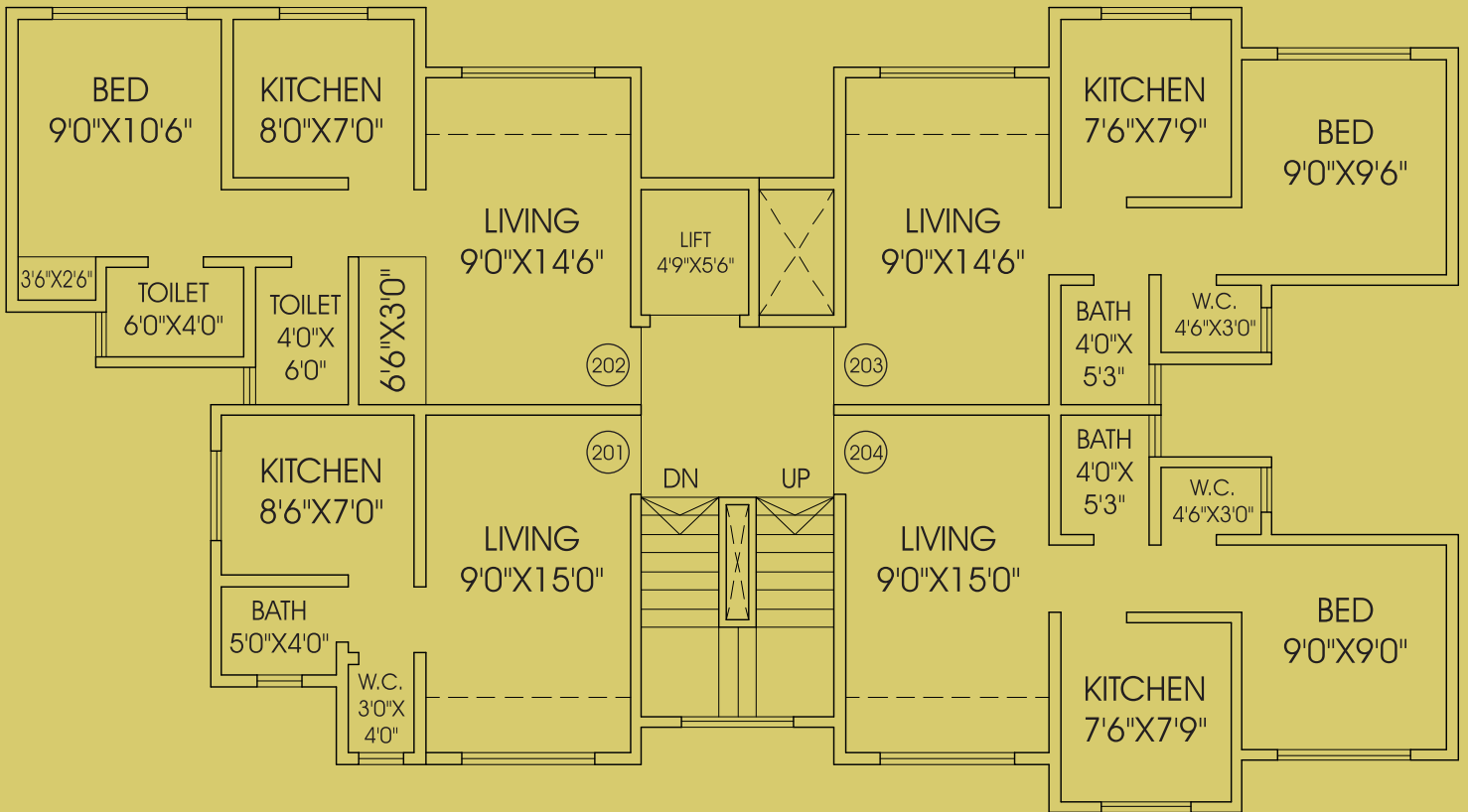


Typical Floor Plan - A Wing

First Floor : Flat No. 101, 102, 103 & 104

Second Floor : Flat No. 201, 202, 203 & 204

Third Floor : Flat No. 301 & 304



Typical Floor Plan - C Wing

First Floor : Flat No. 101, 102, 103, 104, 105 & 106

Second Floor : Flat No. 201, 202, 203, 204, 205 & 206

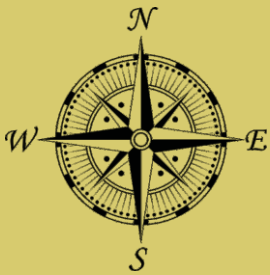
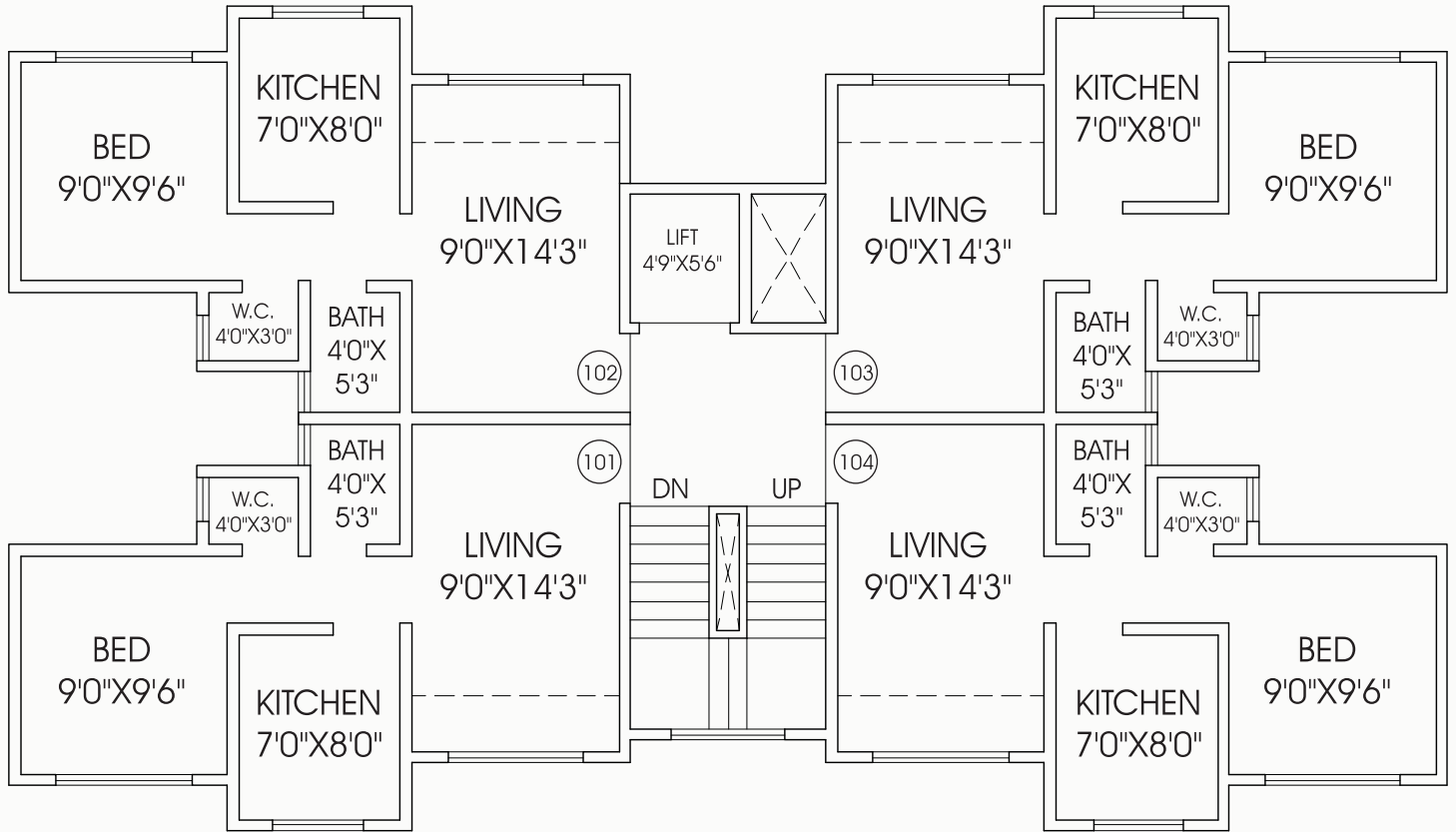
Third Floor : Flat No. 301, 302, 303 & 304

Typical Floor Plan - B Wing

First Floor : Flat No. 101, 102, 103 & 104

Second Floor : Flat No. 201, 202, 203 & 204

Third Floor : Flat No. 301 & 304

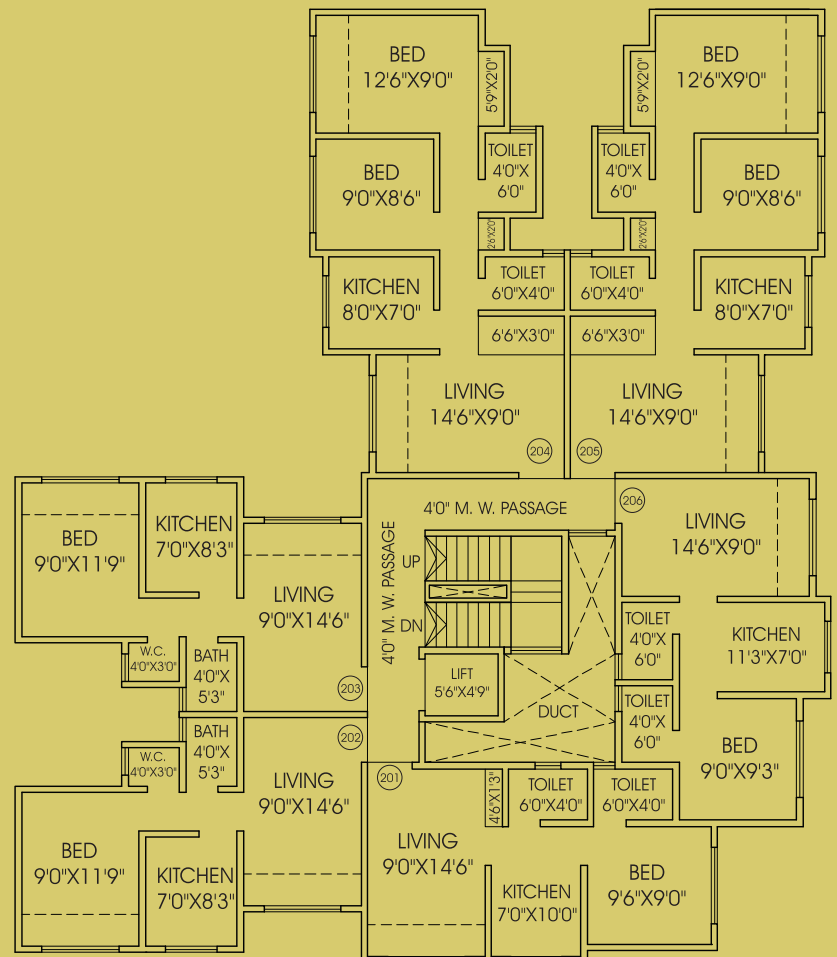


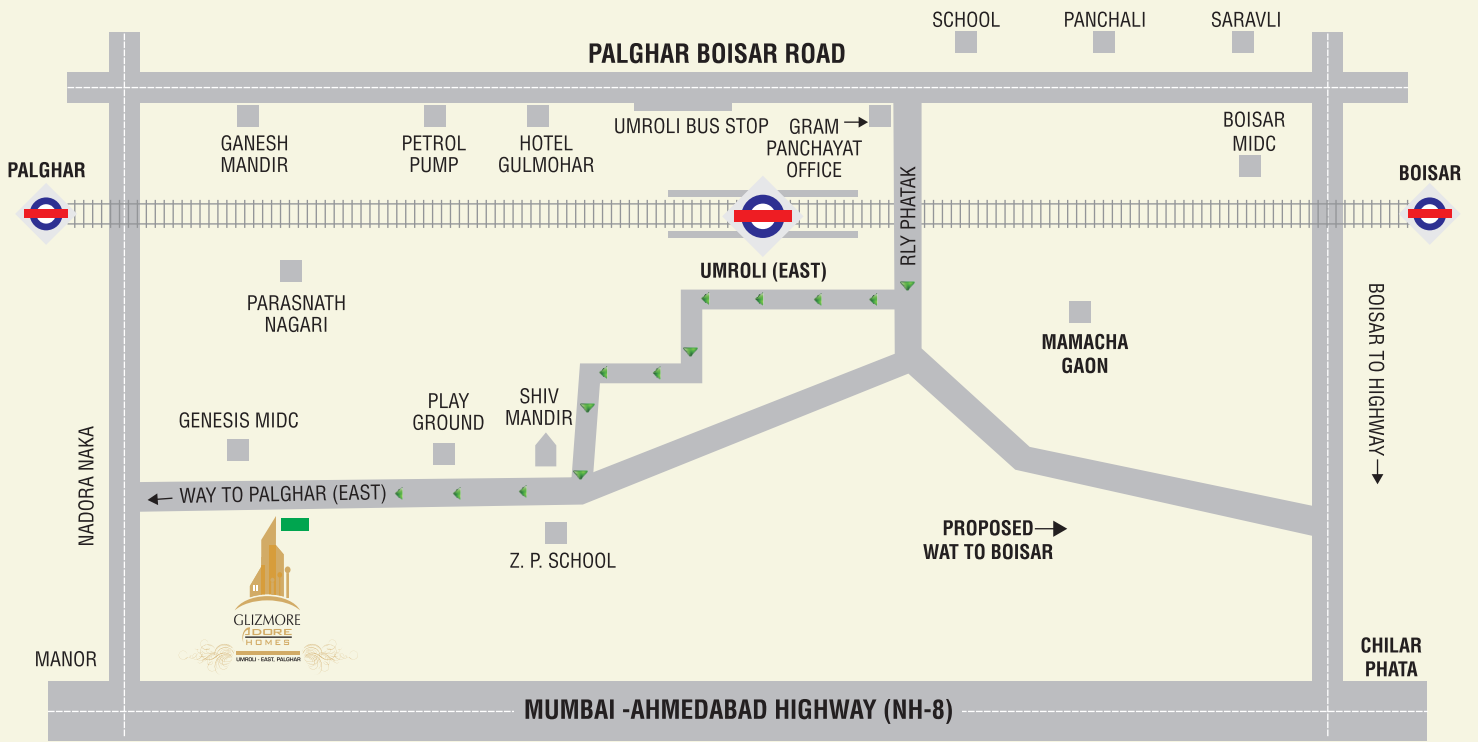
Typical Floor Plan - D Wing

First Floor : Flat No. 101, 102, 103, 104, 105 & 106

Second Floor : Flat No. 201, 202, 203, 204, 205 & 206

Third Floor : Flat No. 301, 302, 303, 304, 305 & 306





* Map not to Scale

Conceptualized & Marketed By



Developed By



PROJECT APPROVED BY

HDFC HOME LOANS



For Booking Enquiries Contact : 7303447799 / 7666447799

Site Address

Adore Homes

Sarpada Genesis MIDC Road,
Padgha, Umroli (E), Palghar,
Dist: Thane.

Architect

RENDERPOINT

Mr. Rajesh Y. Satghare
& Mr. Kekre
Vasai (W)

Legal Advisor

Mr. Rohan Jayraj Chothani
B.com. , LL. B. ,
Kandivali (E)

Contractor

Gayatri Constructions
(L&T Sub Contractor)

Glizmore Infratech Limited

D 501-502, Remi Biz Court, Veera Desai Road, Andheri (West), Mumbai - 400053.

Web: www.glizmoreindustries.com | Email: info@glizmoreindustries.com

Phone - 022 65550053 / 65550054

DISCLAIMER: The information provided in this brochure is indicative and is subject to necessary approvals from the authorities. The developers reserve their right to alter the information, plans and amenities herein. This brochure is to be used as a guide only. Images used are suggestive. The prospective buyer should rely on the specifications and amenities referred to in their final agreement.